

# Copernic Desktop Search 2

By Barry Thompson

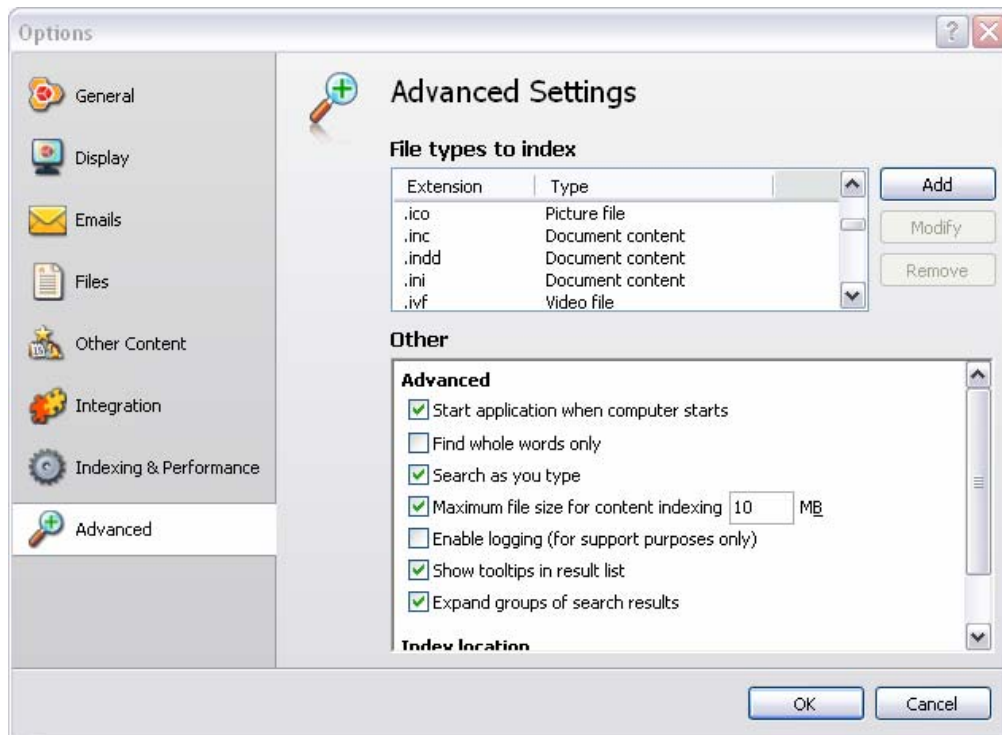
From September 2006 there has become available a revised version of Copernic Desktop Search, CDS 2.0 has been redesigned to enhance the experience of the user, some of the new features allow organisations and businesses to have the product branded with their own company labeling and the program has now had performance levels optimized.

It now allows you to simultaneously search in all categories and eliminate spelling errors with a smart query correction option (i.e. did you mean:). New 'as you type' suggestions for advanced search fields have also been added.

The program features a completely redesigned deskbar providing direct access to search results with per category result filtering. The 'My Searches' feature enables you to save your favorite queries for swift one-click reuse.

## Introduction

For a number of years I have used Copernic Desktop Search. It can be quite difficult sometimes to remember where a particular file is located; Copernic Desktop Search (CDS) has saved my bacon on many occasions. After installing this free program from <http://www.copernic.com>, in version 2 a 4.38MB download, the user needs to set up certain parameters within the program. These include when you want the program to update its indices and if necessary the drives to index. It is possible for the user to include additional files to be indexed; such files for me include the image files from the digital camera that I use X3F, XAR for Xara Xtreme and OVN for Serious Magic's Ovation program and INDD for Adobe's InDesign program. It could be that users have other specific programs which generate other non-standard file types; these can be added to the indexing facility very easily. Now that I very rarely use my Risc PC, I have copied the contents of that hard disc drive to a directory on the PC and those files are also indexed too.



If you are concerned about the privacy of your personal data CDS was designed with privacy in mind. Be assured that the data indexed by CDS stays on your PC and on no account will it be transferred to Copernic or any of its partners. Furthermore, computer activity is never logged. It is solely monitored to enable or disable the indexing process.

Once set up the program needs to index the files in the locations specified, this is probably best set to run when the computer is not going to be used, the program is intelligent enough to stop the indexing when use is being made of the computer and to resume when either mouse or keyboard are not used for a period of five seconds. Having said that, it is possible to set up the program to carry out the indexing whilst the computer is being used. Initially it may take several hours for the indexing to be completed.

I currently have many thousands of data files and photographic images from my digital camera which are indexed and the index files themselves total nearly 300 MB. You may ask why they occupy this amount of space; the reason is that the program indexes all words in all documents. The file types indexed by default are shown here in the Copernic FAQ: <http://www.copernic.com/en/products/desktop-search/faq.html>

### **Using the Program**

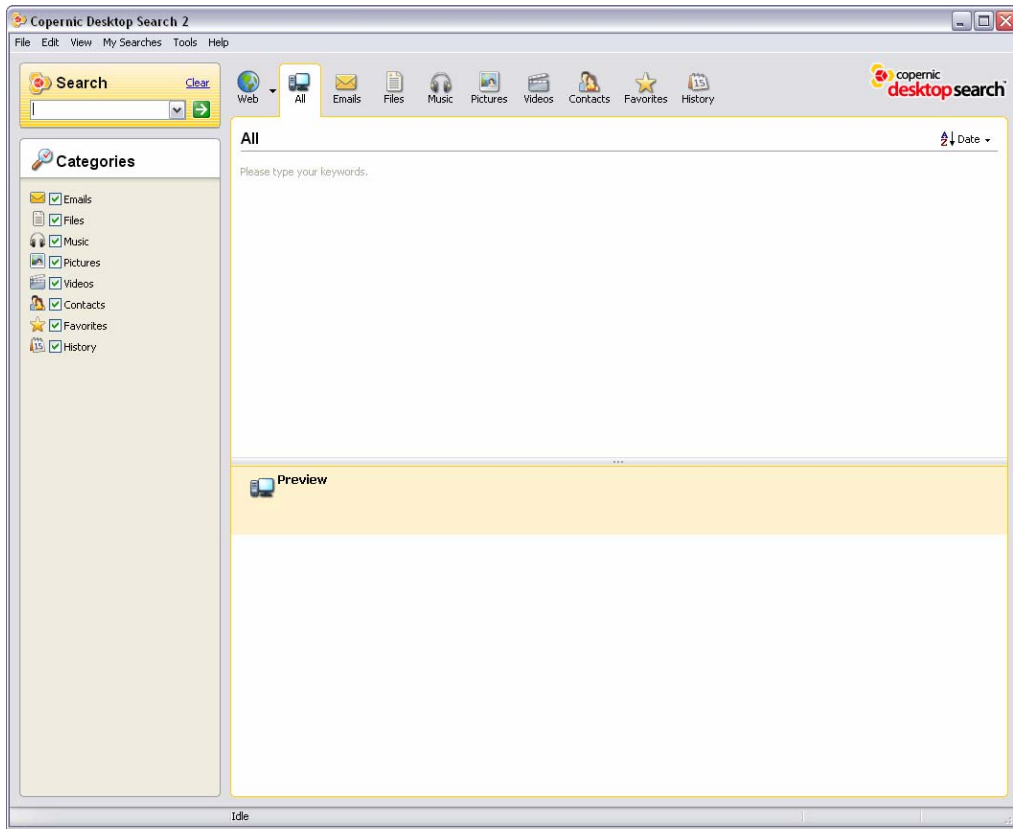
If you cannot remember the name of a file you may be able to remember some of the text contained within it, type that into the “Search box” and usually the result is presented in a fraction of a second, because Copernic has already pre-fetched the information. If you misspell the search string e.g. “photoslop” Copernic will ask “Did you mean: [photoshop](#)” it is hyperlinked therefore clicking on it will correct the word in the search box and some results will instantly become available in the documents window.

If you are in any doubt as to the power of Copernic, both Boolean operators and nested searches within parenthesis are supported and new and updated content is indexed on the fly for near instant results. The ability to index e-mails as they appear in your inbox is currently limited to Outlook only.

Within the program there is support for the Mozilla Thunderbird e-mail client (as well as Outlook and Eudora), including indexing of e-mails, attachments and contact data, along with support for Firefox and Internet Explorer bookmarks and cache. Network drives can also be indexed.

The integrated file viewer possesses an embedded player for both audio and video files, filmstrip image viewing and a dedicated Contacts viewing pane. In use the program proves to be very accurate and is fast. PDF files (minus images) appear in seconds.

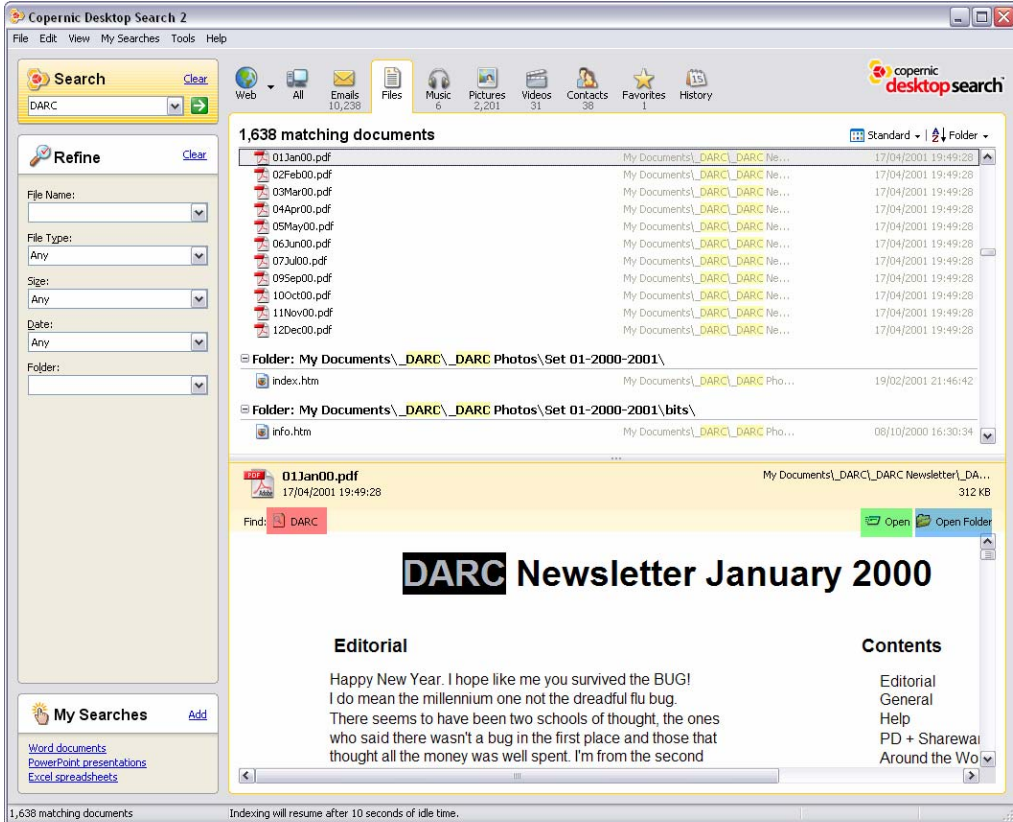
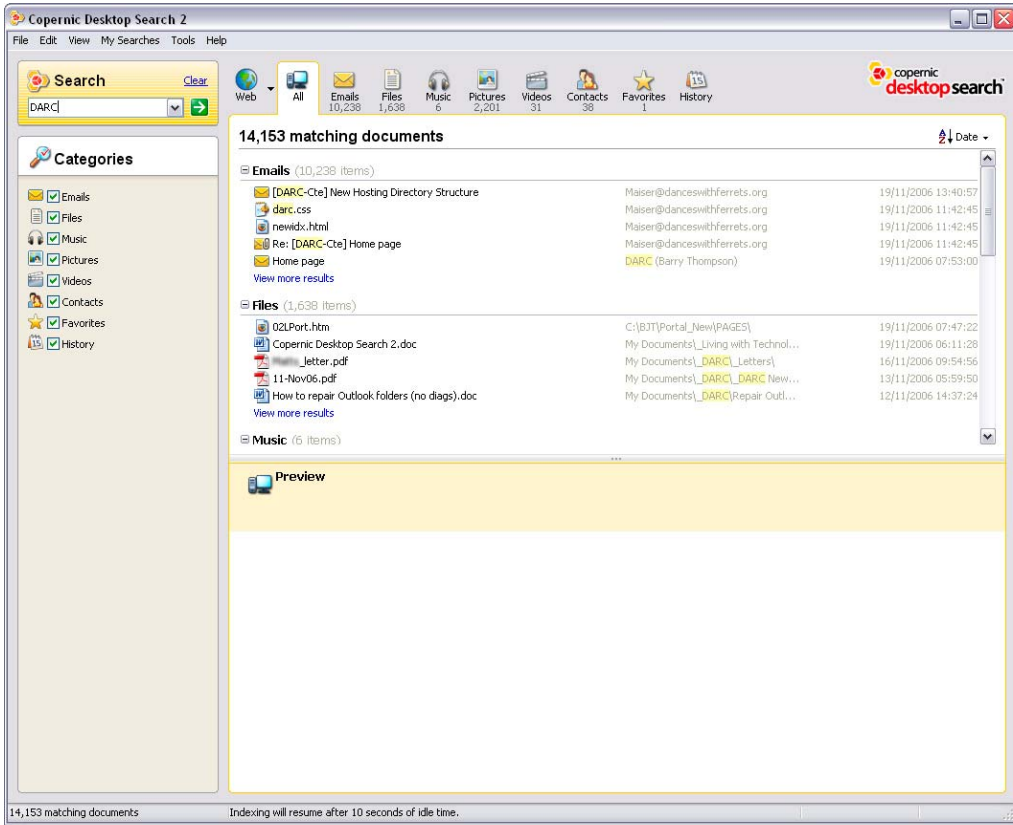
There are two configurations in which the program can be set up to run, from a desktop bar if configured to appear on the task bar or by double clicking on the icon located in the system tray. The interface, shown below, is what will be presented to the user when initiating a search.



As shown in this view the search category is set to “All”, if a more specific search category is required then one can be selected from Web, Emails, Files, Music, Pictures, Contacts, Favorites (sic) or History.

If “All” is selected as the search category and I enter “DARC” as the search string, the window shown below is what is presented to me in a fraction of a second. Copernic has found 14,153 matching documents. There are 10,238 e-mails, 1,638 files, 6 music files, 2,201 pictures, 31 videos and 38 contacts and 1 favourite that are also indexed and contain the search string. Clicking on the any of the other category icons at the top of the page will display the items in that category.

It should be noted that there are only five items shown in each category, the number shown is a configurable option, clicking on “[View more results](#)” will display all results in the scrollable window.



As can be seen in the illustration above, the document which has been selected is shown in the preview window without images. The search string is shown as a yellow highlight. There is also the ability to jump to the next highlighted occurrence in the document with one click on the icon outlined in red. Clicking the green highlighted icon opens the file for editing or viewing in the appropriate application and clicking the blue highlighted icon opens the folder containing the document.

Clicking the **Web** button starts your default web browser and opens it at <http://find.copernic.com> with the search string already inserted.

Barry Thompson – November 2006